

The Observer's Challenge Objects

Submitted by Larry McHenry, Pittsburgh, PA, USA. <http://stellar-journeys.org>

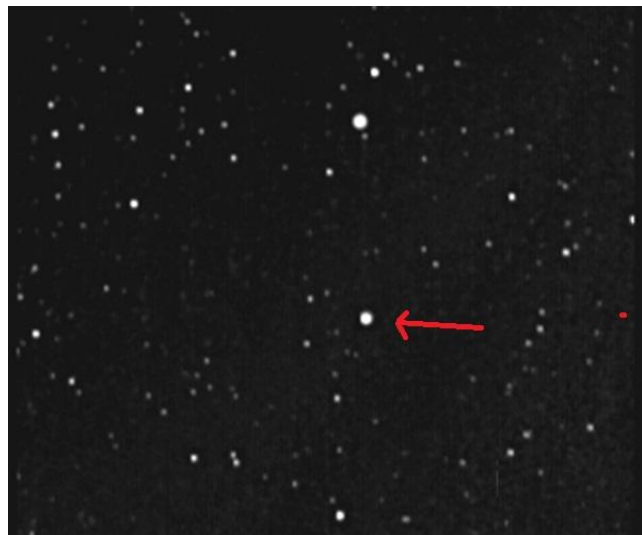
September: NGC6891 – Planetary Nebula – **Delphinus**; Mag. V=10.5; Size 016''
RA: 20h 15m 09s Dec. +12° 42' 15''

Planetary Nebula NGC6891 is located in the Summer constellation of **Delphinus** - 'The Dolphin', and is about 11,784 light years distant, and about 28,000 years old.

NGC6891 was discovered on September 22nd, 1884 by British astronomer Ralph Copeland at the Dun Echt Observatory in Aberdeen Scotland, using a visual spectroscope on a 6.1" refractor.

Visual Sketch:

08/19/1987 - backyard in Pittsburgh, PA. Using a 8" SCT f10, 24mm eyepiece (85x) & UHC filter.



Visually, the planetary was a small, bright, diffuse circular object with a star-like core.

Video-Capture/EAA: 07/07/2010, from Cherry Springs State Park in Pennsylvania.

Using an 8" SCT optical tube @ f6.3 on a GEM mount, with a modified analog security camera and IR filter, 8-second exposure.